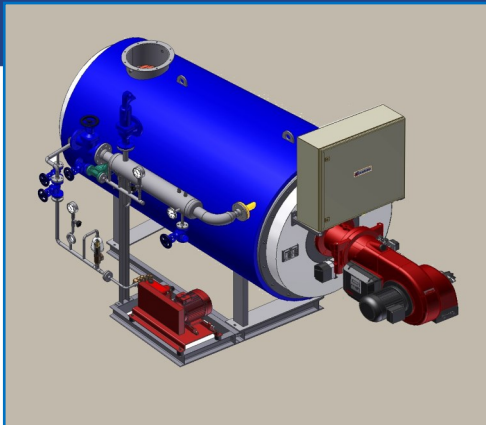
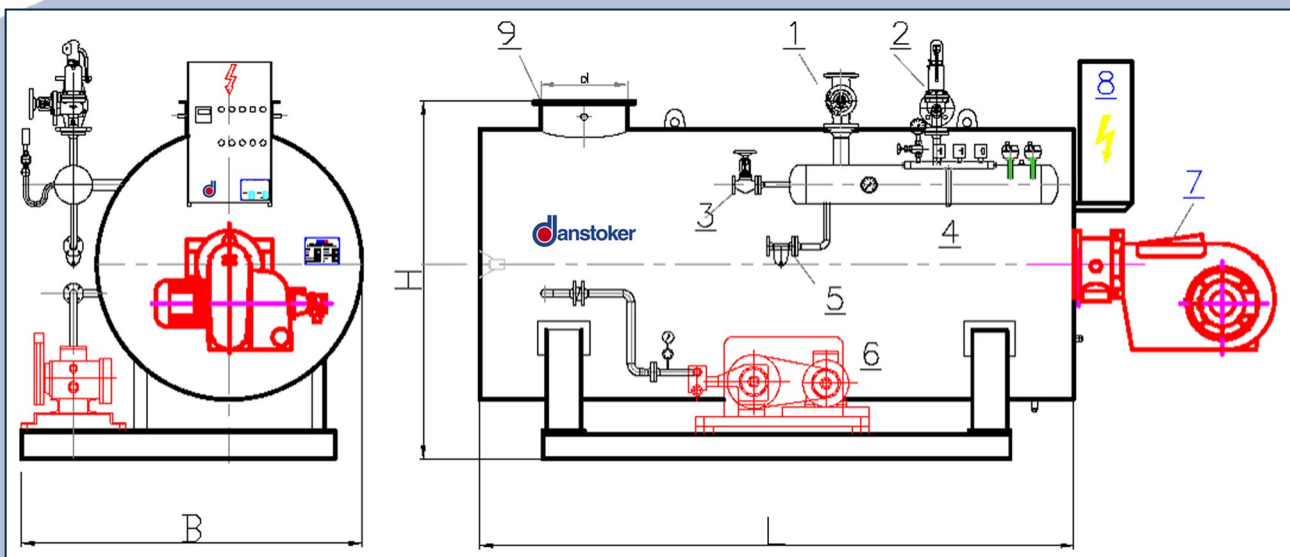


# Steam Generator

Capacity from 100 kg/t to 3.000 kg/t. Oil- or Gasfired.



A Danstoker steam generator type SDL is the right choice, for a high quality steam generator. The steam generator is built according to DGRL 97/23 EN – CE and the controls fulfil the requirements as per TRD 604 / 24 -/ 72h. Danstoker can supply the steam generator fully equipped.



Capacity-Power	Capacity Steam	L	B	H	Weight	Content	Steam-valve	Safety-valve	Drain	Flue Dia.	No.	Description
kW	kg/h	mm	mm	mm	kg	Ltr.	DN	DN	DN	Ø mm		
66	100	1350	1000	1300	700	15	25	20	25	200	1	Steam Valve
131	200	1550	1100	1300	800	20	25	20	25	200	2	Safety Valve
196	300	1650	1100	1300	900	30	32	20	25	200	3	Start Valve
262	400	1800	1100	1350	1000	40	32	20	25	200	4	Drain
326	500	2000	1200	1350	1100	55	32	20	25	200	5	Condensate
392	600	2200	1200	1400	1300	65	32	20	25	200	6	Feed Pump
522	800	2350	1200	1400	1500	150	40	20	25	250	7	Burner
652	1000	2800	1400	1550	1800	220	50	25	25	300	8	Control Board
978	1500	3000	1700	1800	2000	330	65	25	25	300	9	Flue Connection
1304	2000	3300	1800	1900	2800	500	65	25	40	400		
1956	3000	3700	1960	2060	3500	870	80	32	40	450		